

**CONTAINER FARM HOUSE**

- ▲ Built with unique designs, finish & Quality.
- ▲ Quick Construction.
- ▲ Portability at any point of time.
- ▲ Maximum utility in minimum space.
- ▲ No need of plan approval.



**CONTAINER RESTAURANTS**

Creativity develops the beautiful concept of enjoying the restaurants in shipping containers.

- ▲ With any time portability
- ▲ The threat of Business failure due to locations is ruled out in container concept.
- ▲ Can develop your business in a lease land.
- ▲ "N" number of floors can be made.



**CONTAINER MALLS**

It's all about a rethink on utilizing the shipping containers for different applications.

- ▲ Very strong construction than civil
- ▲ Earthquake free construction
- ▲ Highly durable than civil
- ▲ Can enjoy steel appreciation value even after years
- ▲ Quick and fast construction than conventional



**CONTAINER RESORT / BEACH HOUSE**

- ▲ The real solution where civil constructions are impossible due to various reasons.
- ▲ At reasonable price.
- ▲ Unique Designs.



**TECHNO-CAP EQUIPMENTS INDIA PVT.LTD** is one of the renowned business organizations engaged in manufacturing and supply of wide range of container solutions. The reliability and durability of the range of products we manufacture are well appreciated among our clients round the globe. Since its inception in 2009, we have been deeply involved in manufacturing a range of high quality **CONTAINERS** and **PRE-FABRICATED HOUSES** which caters to the diversified requirements of the retail as well as commercial sector. Each one of these products are capable of delivering unmatched performance and durability to its owners. The wide range of sizes and designs of our products enables us to meet unique requirements of our customers without much effort. The products are built from the ground up using superior quality materials that are thoroughly tested for durability and reliability. Our panels of experts are committed to keep us abreast of latest developments in the industry so as to meet the ever-changing requirements of our clients in the best possible manner. When it comes to after sales support, we simply care for each of the units we sold as if they were still under our custody in our yard.

## Easy Pools



### CONTAINER SWIMMING POOLS

- ▲ Completely independent.
- ▲ Inbuilt waterfalls with led lightings.
- ▲ With complete set of filters.
- ▲ Highly durable.
- ▲ Safer than any other pool concept.
- ▲ Can keep above the ground and under the ground.
- ▲ Available from 4 feet to 5.5 feet height.
- ▲ Infinity pool.
- ▲ Glass walls.
- ▲ While shifting take the pool with you.
- ▲ Can be built with water fountain.



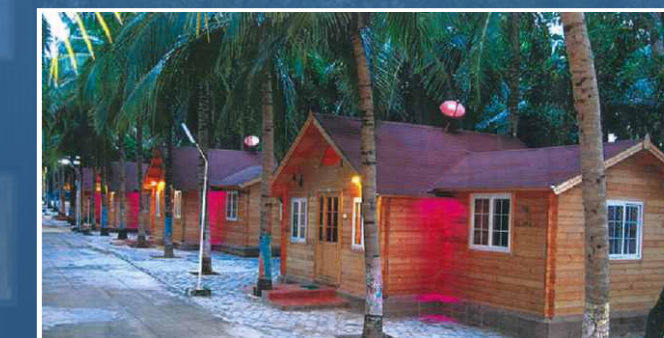
### LABOUR CAMP CONTAINER / HOSTEL CONTAINER

- ▲ Highly useful for real construction companies to accommodate their force with portability
- ▲ Offers a capacity of 36 people in class finish with individual safety locker
- ▲ Fully insulated for heat proof, with proper ventilation and with all standards.



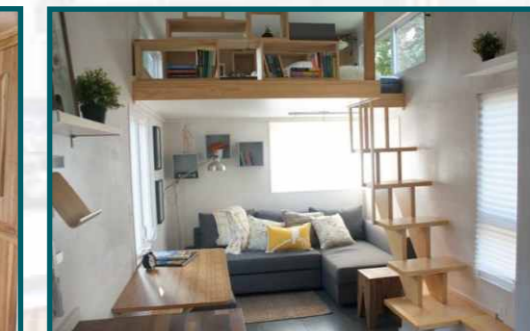
### PORTABLE WOODEN HOUSES

- ▲ Constructing wooden house with easily portability at any point of time
- ▲ No expertise are required to move from one place to another
- ▲ Any size, design and ambience are possible
- ▲ Multiple stories are possible
- ▲ Low cost and immediate construction than conventional



## HONEYMOON COTTAGES

- ▲ Concept of living rich in a small space with maximum utility.
- ▲ Lovely designs, Cute and wonderful living experience
- ▲ Can be used as honeymoon cottages as well as Farm houses and resorts with an easily maintainable designs
- ▲ Most suitable designs for honeymoon stay
- ▲ Wonderful living experience
- ▲ Lively and positive energy generating designs
- ▲ Far less time than conventional construction
- ▲ Any time portability
- ▲ High ceiling of 14FT with slope roof



### MOVABLE BUNK HOUSE / SITE OFFICE CONTAINER

- ▲ Manufactured for dwelling and working purpose.
- ▲ One time investment and highly reusable for lifetime.
- ▲ The design is purely custom made and no size restrictions on it.
- ▲ Will be facilitated with standard light fittings, fans, AC unit & etc.,